

WaterShed[®]

PREMIUM QUALITY RAINWEAR



GOWATERSHED.COM



StormCreek™

POLYURETHANE COATED NYLON MATERIAL

Industrial Wear

Fully Seam Sealed
Durably Waterproof
Totally Windproof

Durable Construction

Double Stitched
Tough Multi-Season Material

Premium Performance

Comfortable Industrial Workwear
Custom Fitting Available
Custom Options



RECOMMENDED USES

- Industrial
- Construction
- Recreation
- Utilities
- Transportation

ANSI AVAILABLE



StormCreek™
[CLASS 3 COMPLIANT]

COATS

(NS) = NON STOCK

- | | |
|----------|---|
| 600 | 32" Jacket, Snap Storm Front, Fleece Collar, Hood Snaps, Cuff Snaps |
| 637 (NS) | 32" Jacket, Snap Storm Front, Attached Hood, Cuff Snaps |

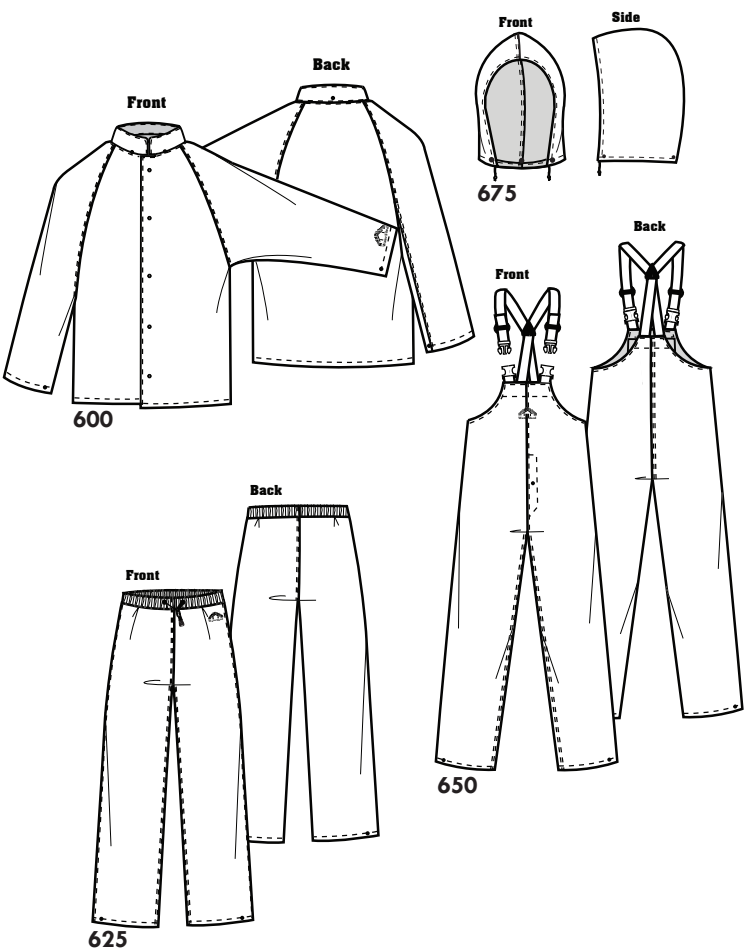
BIB OVERALLS AND PANTS

- | | |
|-----|--|
| 650 | Bib Overall, Elastic Suspenders with Heavy Duty Fasteners, Snap Fly. |
| 625 | Waist Pant, Heavy Elastic Waist w/ Drawstring, No Fly |

HOOD

- | | |
|-----|-------------------------------------|
| 675 | Snap on Attached Hood w/ Drawstring |
| | M Fits Close to Head. |
| | XL Fits Over a Hard-Hat |
| | WIDE Fits Jackets 4XL (+) |

STYLES



STOCK COLORS



NON-STOCK COLORS





08-500 Series, Made with Polyurethane Coated Nylon Material

STANDARD SIZES: XXS, XS, S, M, L, XL

(+) SIZES: 2XL, 3XL, 4XL, 5XL, 6XL, CUSTOM XL

StormCreekII™

POLYURETHANE COATED NYLON MATERIAL

Multi-Season Comfort

Ventilated Caped Front & Back

Lightweight & Flexible

Durable Construction

210 Denier Nylon Exterior

Double Stitched

Seam Sealed

Tough Tear Resistant Material

Double Layer Bibs

Premium Performance

100% Waterproof

100% Windproof

RECOMMENDED USES

- Industrial

- Construction

- Recreation
- Utilities

- Transportation



08-500

COATS

08-500	32" Cape Style Jacket, Double Layer, Mesh Vent Back, Inner Sleeve Cuff Closures, Snap Front, Hood Snaps
--------	---

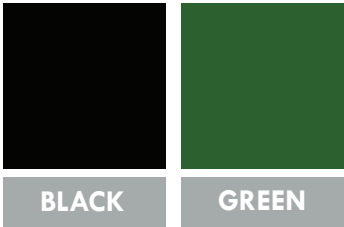
BIB OVERALLS AND PANTS

08-550	Bib Overall, Double Layer, Zipper Fly, Waist Drawcord, Velcro Chest Pocket, Elastic Suspenders with Heavy Duty Fasteners
--------	--

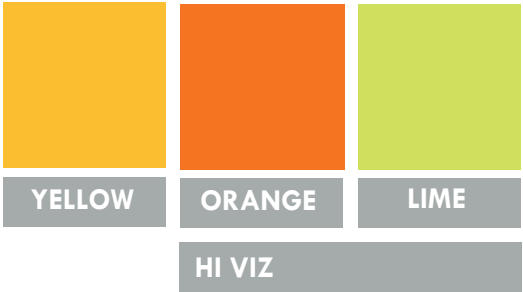
HOOD

08- 575	Hood, Double Layer, Drawstring, Snaps
	M Fits Close to Head

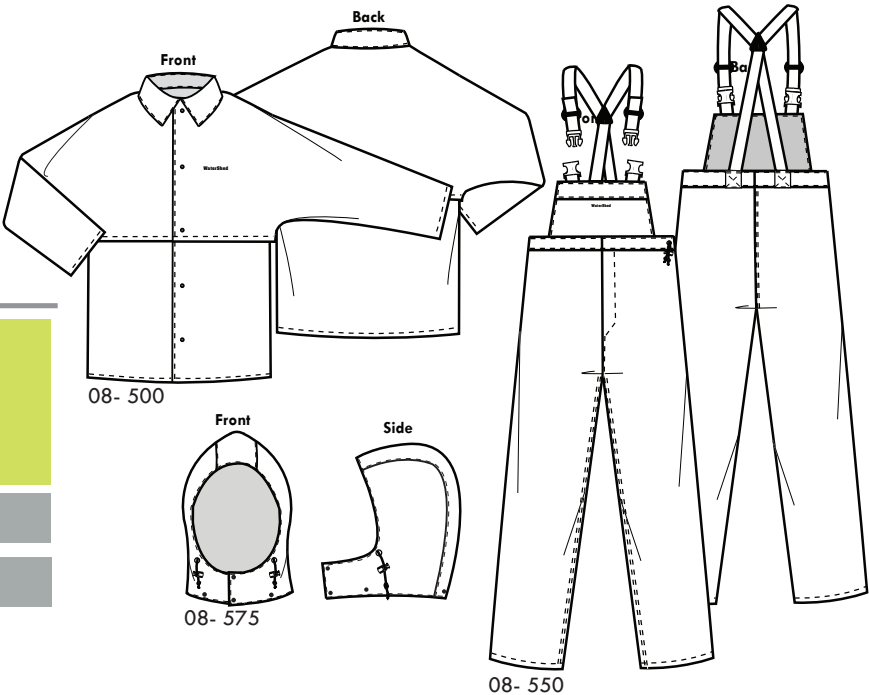
STOCK COLORS



NON-STOCK COLORS



STYLES



NitriShed®
NITRILE COATED NYLON MATERIAL

Industrial Wear
210 Denier Nylon Exterior
Flexible Heavy Weight Material

Versatile Durability
Soft and Comfortable
Functional Multi-Season Use

Extreme Performance
100% Waterproof
100% Windproof
Doubled Stitched and Seam Sealed

RECOMMENDED USES

- Industrial
- Fishing/Boating
- Forestry
- Recreation



300 Series, Made with Nitrile Coated Nylon Material

STANDARD SIZES: XXS, XS, S, M, L, XL

(+) SIZES: 2XL, 3XL, 4XL, 5XL, 6XL, CUSTOM XL

COATS

300 32" Jacket, Snap Storm Front, Fleece Collar, Hood Snaps, Cuff Snaps

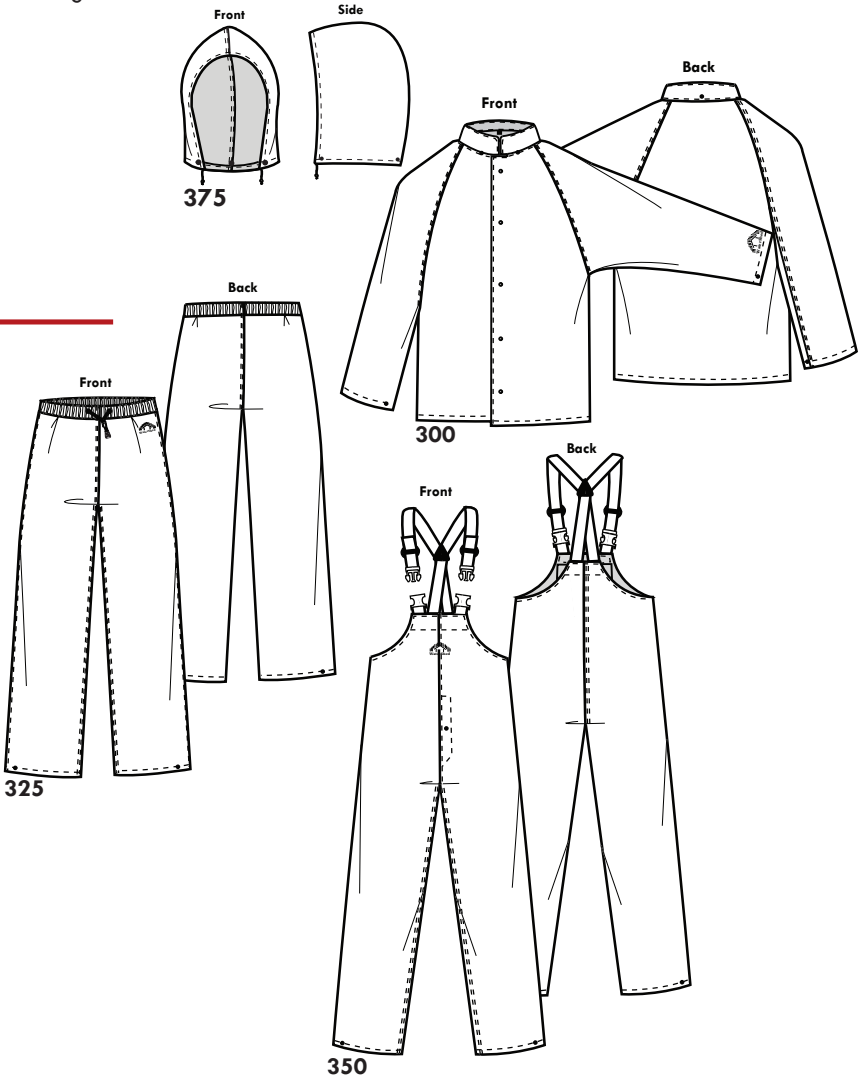
BIB OVERALLS AND PANTS

350 Bib Overall, Snap Fly, Elastic Suspenders with Heavy Duty Fasteners
350K (NS) Bib Overall, Elastic Suspenders with Heavy Duty Fasteners, Snap Fly, Reinforced Knee
325 Waist Pant, Heavy Elastic Waist Drawstring w/Toggle, No Fly

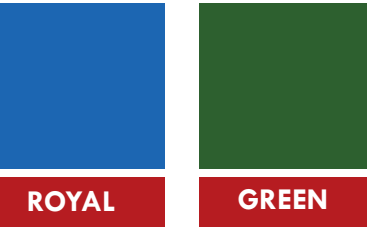
HOOD

375 Snap on Attachable Hood w/Drawstring
M Fits Close to Head
XL Fits Over a Hard Hat
WIDE Fits Jackets 4XL (+)

STYLES



STOCK COLORS



NON-STOCK COLORS





200 Series, Made with Neoprene Coated Nylon Material

STANDARD SIZES: XXS, XS, S, M, L, XL

(+) SIZES: 2XL, 3XL, 4XL, 5XL, 6XL, CUSTOM XL

RuggedWear™

NEOPRENE COATED NYLON MATERIAL

Durable Construction

Tough Multi-Season Material

Fully Tape Sealed

Double Stitched

Durable and Flexible

100% Waterproof

100% Windproof

RECOMMENDED USES

- Forestry
- Grounds and Facilities Maintenance
- Fishing/Boating
- Recreation
- Construction



COATS

200 32" Jacket, Snap Storm Front, Fleece Collar, Hood Snaps, Cuff Snaps

BIB OVERALLS

250 Bib Overall, Elastic Suspenders w/Heavy Duty Fasteners, Snap Fly

HOOD

275 Hood, Double Layer, Drawstring, Snaps

M Fits Close to Head

XL Fits Over a Hard Hat

STYLES

STOCK COLORS

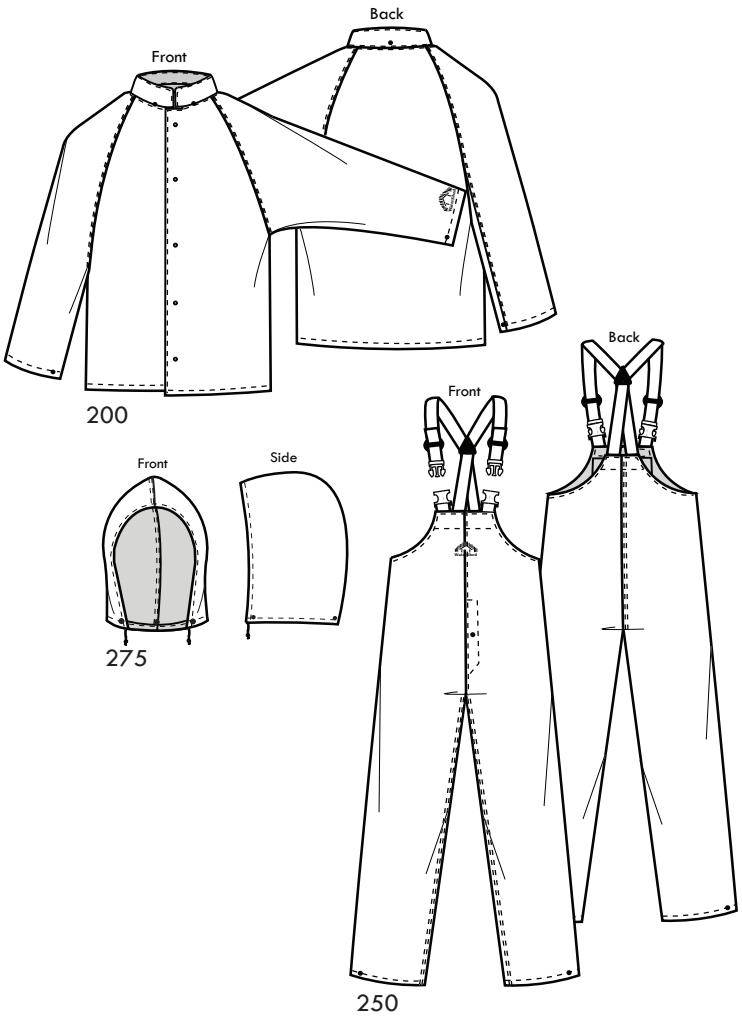


GREEN

NON-STOCK COLORS



YELLOW





900 Series, Made with GORE-TEX® 3-Layer Material
STANDARD SIZES: XXS, XS, S, M, L, XL (+) SIZES: 2XL, 3XL, 4XL, 5XL, 6XL, CUSTOM XL

StormShield™

GORE-TEX® 3-LAYER MATERIAL

Total Protection From The Elements

Fully Seam Sealed
Durably Waterproof
Totally Windproof
Highly Breathable

Ultimate Durability

Double Stitched
Tough Multi-Season Material

Premium Fit

Comfortable Industrial Workwear
Custom Fitting Available
Custom Options

RECOMMENDED USES

- Construction
- Forestry
- Transportation
- Recreation
- Utilities
- Grounds Maintenance

ANSI AVAILABLE



900

COATS

(NS) = NON STOCK

- 900 30" Jacket, Snap Storm Front, Cuff Snaps, Hood Snaps
- 935 (NS) 30" Jacket, Snap Storm Front, 2 Bellow Pockets w/Flaps, Cuff Snaps, Hood Snaps

BIB OVERALLS AND PANTS

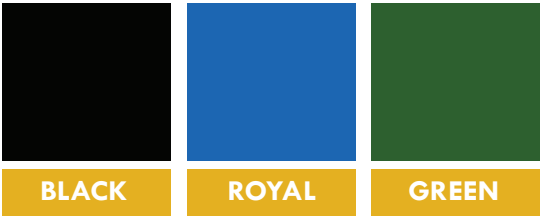
- 925 Waist Pant, Heavy Elastic, Waist w/Drawstring, Ankle Snaps, Double Knee, No Fly
- 950 Bib Overall with Snap Fly, Double Knee, Ankle Snaps, 1.5" Side Release Buckles on Heavy Duty Elastic Suspenders.

HOOD

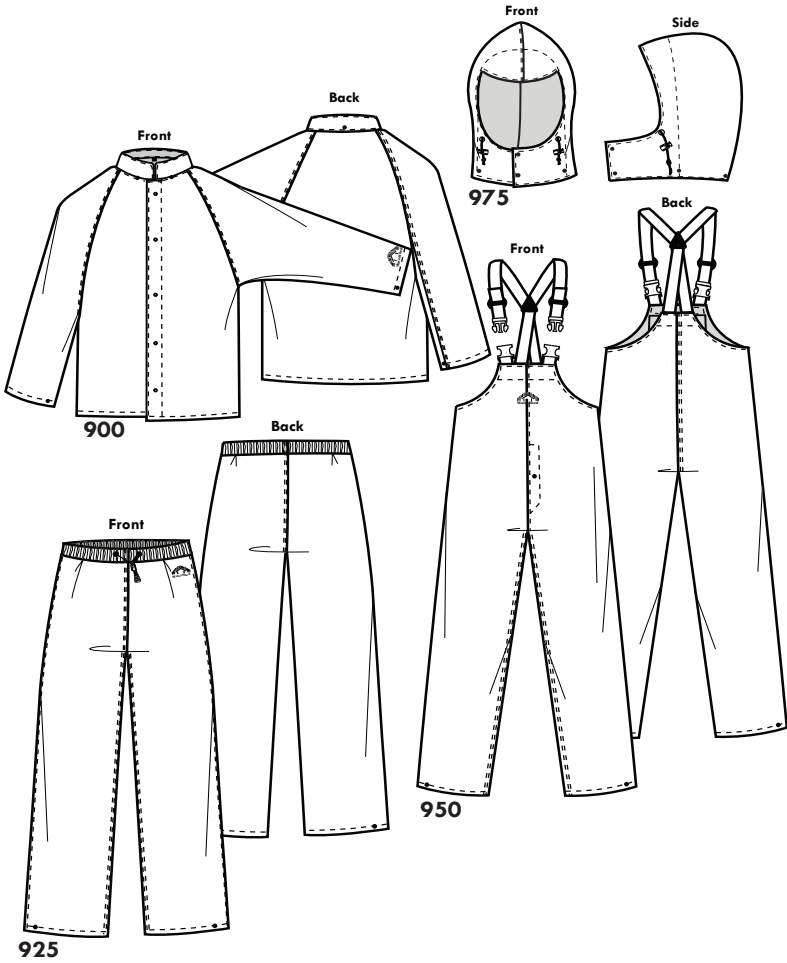
- 975 M Hood Fits Close to Head
- L Hood Fits Over a Ball Cap
- XL Hood Fits Over a Hardhat
- WIDE Fits Jackets 4XL (+)

STYLES

STOCK COLORS



NON-STOCK COLORS





600 & 900 ANSI SERIES

STANDARD SIZES: XXS, XS, S, M, L, XL

(+) SIZES: 2XL, 3XL, 4XL, 5XL, 6XL, CUSTOM XL

ANSI

StormShield™

[CLASS 3 COMPLIANT]



939A3

ANSI

StormCreek™

[CLASS 3 COMPLIANT]



639A3



StormCreek™

[ANSI CLASS 3 COMPLIANT]

ANSI COMPLIANT

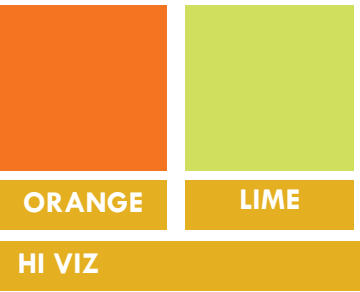
- 639A3
(NS)

30" Jacket, Snap Storm Front, Fleece Collar, Hood Snaps, Cuff Snaps, ANSI, ISEA 107-2004 Class 3 ReflectiveTape
- 625AE
(NS)

Waist Pant, Heavy Elastic Waist Drawstring, No Fly, ANSI/ISEA 107-2004 Class E Reflective Tape
- 650AE
(NS)

Bib Overall, Elastic Suspenders with Heavy Duty Fasteners, Snap Fly, ANSI/ISEA 107-2004 Class E Reflective Tape

STOCK - HI-VIS COLORS



StormShield™

[ANSI CLASS 3 COMPLIANT]

ANSI COMPLIANT

(NS) = NON STOCK

- 939A3

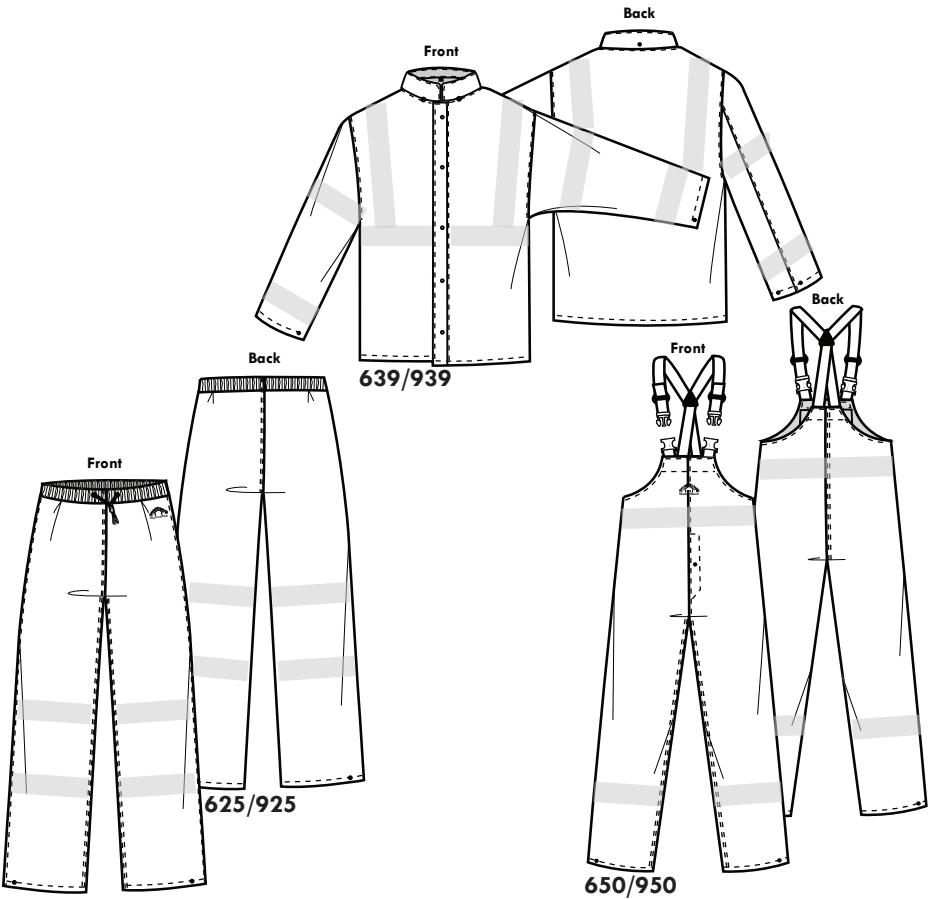
30" Jacket, Snap Storm Front, Hood Snaps, Cuff Snaps, ANSI/ISEA 107-2004 Class 3 Reflective Tape
- 945A3
(NS)

Same as 939A3, w/2 Bellow Pockets w/Flaps, ANSI/ISEA 107- 2004 Class 3 Reflective
- 925AEZ
(NS)

Waist Pant, Heavy Elastic Waist w/Drawstring, No Fly, ANSI/ISEA 107-2004 Class E Reflective Tape, Double Knee
- 950AEZ

Bib Overall, Elastic Suspenders w/Heavy Duty Fasteners, Snap Fly, ANSI/ISEA 107-2004 Class E Reflective Tape, w/12" Leg Zips, Double Knee

STYLES



NIKWAX PRODUCTS - PRODUCT CARE

08-TW-10	Nikwax Tech Wash, Use as pre-wash before TX Direct Treatment, 10 oz.
08-TX-10	Nikwax TX Direct DWR Waterproofing Treatment, 10 oz.

WATERSHED SPECIAL ORDER OPTIONS

JACKET ADDITIONS

SP-VC	Hook and Loop Tab Closures
SP-BP	Bellow Pockets with Top Flap
SP-FP	Flat Pockets with Top Flap
SP-HWP	Fleece Lined Handwarmer w/Bellow Pockets

LEG ZIPPERS

SP-12-ZIP	12” Waterproof Leg Zippers to Garment
SP-18-ZIP	18” Waterproof Leg Zippers to Garments

REINFORCEMENTS TO NEW GARMENTS

SP-CL	500 Denier Cordura Leg Covers
SP-CS	500 Denier Cordura Shoulder Covers
SP-CE	500 Denier Cordura Elbow Covers to
SP-SC	500 Denier Cordura Seat Cover
SP-RK	Reinforced Knee of Garment Material

REFLECTIVE TAPE

	1.5” Scotchlite® Heat Applied	2” Scotchlite® Heat Applied
Coat Back	RT-S1.5-BK	RT-S2-BK
Chest & Back	RT-S1.5-CB	RT-S2-CB
Coat Cuff	RT-S1.5CC	RT-S2-CC
Coat Elbow	RT-S1.5-CE	RT-S2-CE
Coat Sleeve	RT-S1.5-CS	RT-S2-CS
Coat Hem	RT-S1.5-HE	RT-S2-HEM
Pant Cuff	RT-S1.5-PC	RT-S2-PC
Pant Sides	RT-S1.5-SI	RT-S2-SIDE
Safety Tape Jacket		RT-S2-S/B
Safety Tape Bib or Pant		RT-S2-B-L

ADD OR SUBTRACT TO LENGTH OF SLEEVE, BODY, INSEAM OR RISE

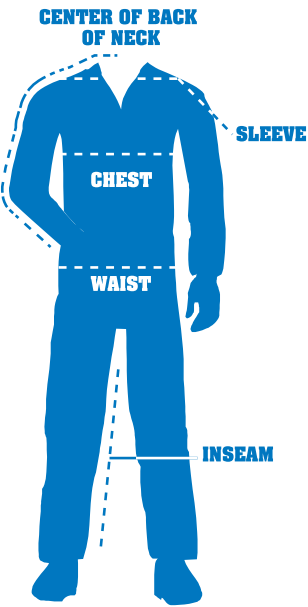
1” to Length of Sleeve, Inseam or Rise
2” to Length of Sleeve, Body, Inseam or Rise
3” to Length of Sleeve, Inseam or Rise
4” to Length of Sleeve, Body, Inseam or Rise
5” to Length of Sleeve, Inseam or Rise
6” to Length of Sleeve, Body, Inseam or Rise

SIZING INFORMATION

	SIZE	XXS	XS	S	M	L	XL	2XL	3XL	4XL	5XL	6XL
COAT	CHEST	32-34	35-37	38-40	41-43	44-46	47-49	50-52	53-55	56-58	59-61	62-64
	SLEEVE	31 1/4	32	32 3/4	33.5	34 1/4	35	35 3/4	36.5	37 1/4	38 1/4	39 1/4
PANTS	WAIST	24-26	27-29	30-32	33-35	36-38	39-41	43-44	45-47	48-50	51-53	54-56
	INSEAM	28	28.5	29	29.5	30	31	32	32.5	33	33.5	34

Above measurements are in inches.
We recommend taking measurements over your clothes.

For detailed sizing information, watch our Fit It Right video
gowatershed.com/services/fit-it-right-video/



Current Pricing Available Upon Request

WaterShed®

TERMS & CONDITIONS

WaterShed, LLC. Terms and Conditions

GENERAL: The suggested retail prices shown herein are not intended to represent actual resale prices in any particular market. No obligation is assumed by this Company to sell the goods listed herein or in its catalog to any person, at any price. \$100 order minimum. \$10 surcharge on orders under \$100. All orders are subject to credit approval.

PRICES: This price list supersedes all prior price lists or quotations to like merchandise. Prices are subject to change without notice and all orders are accepted at the price prevailing at time of order.

TERMS: NET 30 DAYS. On Approved Credit.

FREIGHT: FOB Salem, Oregon USA. Single orders of rainwear valued at \$1000.00 or more to be shipped to one location within the continental United States will be prepaid by WaterShed. Single orders of rainwear valued at \$1500.00 or more to be shipped to one location within Alaska or Hawaii will be prepaid by WaterShed.

WILL CALL: Will Call items may be left in will call for five days. If not picked up on the sixth day the items will be returned to stock.

LIMITED LIFETIME WARRANTY: WaterShed warrants to the original purchaser only that for the normal life of this garment, the user will experience no defects in material and workmanship. If such a problem should exist, WaterShed will repair or replace the garment at its discretion. To obtain warranty service, please contact WaterShed at 1-800-848-8092 and ask for the customer service department.

LIMITATIONS: The normal life of the garment may vary depending on its use and care. The user is responsible for following the proper care and cleaning instructions on the garment care tag. This warranty does not cover problems due to garment usage inconsistent with its customary use or damage caused by chemicals, fire, negligence, accident, or modification. All implied warranties are limited in duration to 90 days from the date of purchase. The liability of WaterShed under any express or implied warranty is limited to the replacement value of the warranted garment. WaterShed shall not be liable for any incidental or consequential damages. Consumer shall be responsible for all shipping costs. Notice to Consumer: Some states do not allow limitations on how long an implied warranty lasts, so the above limitation may not apply to you. Some states do not allow the exclusion or limitation of incidental or consequential damages, so the above limitation or exclusion may not apply to you. This warranty gives you specific legal rights, and you may also have other rights which may vary from state to state.

RETURNED GOODS: All WaterShed products are covered by the Limited Lifetime Warranty covering defects in material or workmanship. Review warranty terms carefully to be sure warranty is applicable before requesting a Return Authorization Number to avoid any unnecessary freight cost. Merchandise may not be returned to WaterShed without authorization. Call 800-848-8092, ask for the customer service department and ask for a Return Authorization Number. All return shipments must be prepaid. Shipments must include the Return Authorization Number on the packing slip and a copy of invoice or sales receipt. Return Authorization Number must be marked on the outside of package. Any shipment sent collect or without authorization will be refused. Returned goods are subject to a 20% restocking fee.

DELIVERIES: Title of goods passes to the purchaser when the product is delivered to, and signed for by, the purchaser. For the purchaser's protection, shipment should be inspected and counted, upon receipt, before signing the bill of lading or manifest.

Once you have signed for the shipment as complete, the trucking company's liability for improper shipment ends. If discrepancies arise after signing, WaterShed cannot file a claim. WaterShed will not be responsible for shortage replacements when a proof of delivery shows that the shipment was signed for clear and complete by the recipient.

The purchaser has 10 days from receipt of an order to alert WaterShed of discrepancies, which includes item count, and the notification must be accompanied by a signed bill of lading where applicable.

All delivery dates are subject to credit approval and account status at time shipment is to be made. No shipment will be made if the purchaser's account is in arrears or if shipment would cause any applicable credit limit to be exceeded.

The Company is not responsible for delivery delays which are due to unavailability of raw materials, fire, flood, accident, strike, embargo, war, labor stoppage, inadequate transportation, delay or default of vendors, government regulations or any other causes beyond its control.

THE ABOVE TERMS AND CONDITIONS, AND ANY TERMS AND CONDITIONS, CONTAINED IN THE COMPANY'S PRINTED ACKNOWLEDGMENT OR INVOICE APPLY REGARDLESS OF ANY PRINTED TERMS ON THE BUYER'S ORDER.

RAINWEAR WARRANTY INFORMATION: (Note: Return Authorization Numbers are required on all returned goods.)

WHAT GARMENTS SHOULD BE CONSIDERED FOR WARRANTY?

Garments with an obvious visual factory flaw. If in doubt, call for a Return Authorization Number and have it tested before assuming that credit will be issued. A WaterShed employee will make an accurate determination and the garment will be repaired and returned or replaced or credited at WaterShed's discretion. Rips, tears, pinholes, and other user created defects are not valid warranty claims, however they might be repairable. (See below)

WHAT WILL NOT BE CONSIDERED A VALID WARRANTY?

Any article that has an odor of chemicals. WaterShed makes rainwear, not chemical suits. Garments are not covered by warranty if they have been used in a manner inconsistent with their customary use or damage caused by chemicals, fire, negligence, accident, or modification. (Note: Return Authorization Numbers are required on all returned goods.)

WHAT CAN BE REPAIRED? WaterShed will only repair an article that can be appropriately repaired. Repairs can be made to most any tear or pinhole in the fabric, faulty bib clips, straps (we can provide a supply of these), or any snap/hardware malfunction. Garments must be clean when returned to WaterShed. If a garment is returned dirty, a \$15.00 laundering fee will be charged for each garment.

BUILT WITH GORE-TEX® FABRIC FOR PERFORMANCE UNMATCHED BY ANY OTHER WATERPROOF, WINDPROOF, BREATHABLE BARRIER. GORE-TEX®, GORE AND DESIGNS ARE TRADEMARKS OF W. L. GORE & ASSOCIATES, INC



2895 VALPAK RD. NE
SALEM, OREGON 97301

T (800)848-8092 P (503)585-6741 F (503)581-7604
P.O. BOX 7746
SALEM, OREGON 97303