

gowatershed.com • 1-800-848-8092



STORMFORCE®

BY **WaterShed**®



TOTAL PROTECTION

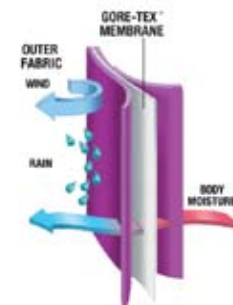
Constructed of GORE-TEX® 3-layer laminate, proven to be durably waterproof, windproof and breathable fabric.

ULTIMATE PERFORMANCE

Strategic construction of front hand warming cargo pockets allows quick and easy access to equipment. Optional zip in liner provides warmth in colder temperatures.

DEPARTMENT FOCUSED

We put you in control. Choose from 13 different colors including two-tone combinations. Select from multiple options to build the perfect jacket for your department.



BENEFITS OF GORE-TEX®

GORE-TEX® laminate is machine washable.

Remains waterproof after more wet flexing, abrasion and cold flexing than any other waterproof/breathable fabric.

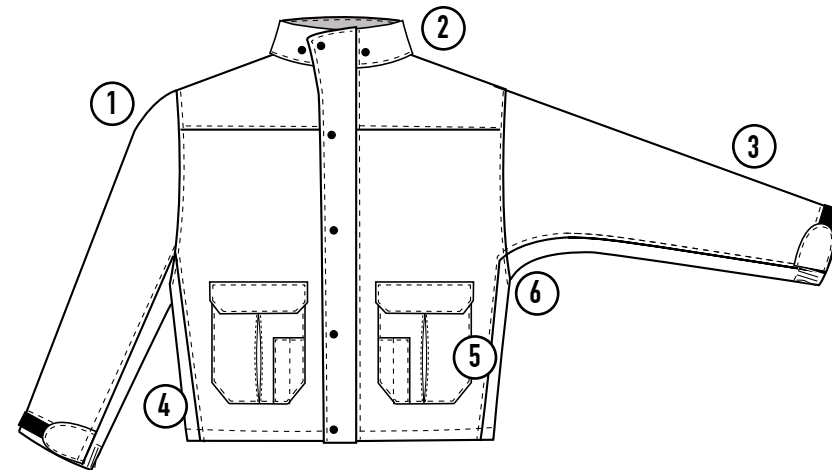
A total barrier to rain and snow, yet, permits perspiration vapor to escape, allowing your body to cool itself naturally through evaporation.

GORE-TEX® laminate is made by world class manufacturers who are licensed by W.L. Gore & Associates, Inc. and agree to manufacture according to Gore's strict quality assurance performance requirements.



2895 Valpak Road NE
Salem, Oregon 97301
PO BOX 7746
Salem, Oregon 97303
orders@gowatershed.com

T 800.848.8092
P 503.585.6741
F 503.581.7604
gowatershed.com



STANDARD FEATURES

GORE-TEX® 3-Layer laminate

Two fleece lined hand warmer cargo pockets w/double pen pockets

EZ-action articulated sleeves

Elastic hook/loop cuff closures

Color matched badge tab or Customer supplied breast patch

Color matched mic tabs

Front storm Flap

3" Stand up collar

Snaps for optional hood

CUSTOM OPTIONS

- ① 13 colors available plus two-tone option
- ② Six collar & hood configurations
- ③ 12 sleeve lengths (1" increments)
- ④ Nine body lengths (2" increments 20" - 36")
- ⑤ Four pocket options
- ⑥ Weapons access & underarm water resistant zippers

COLOR OPTIONS



ALSO AVAILABLE

- Custom back panels
- Stealth mode
- 3M-Scotchlite™ reflective
- Zip-in fleece liner available
- Embroidery / screen print
- Badge & patch custom options
- Zip in liners available





TOTAL PROTECTION

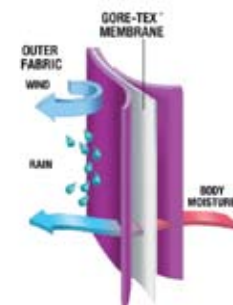
Constructed of GORE-TEX® 3-layer laminate, proven to be durably waterproof, windproof and breathable fabric.

INNOVATIVE DESIGN FOR FIRST RESPONDERS

Proudly manufactured in the U.S.A.

DEPARTMENT FOCUSED

We put you in control. Choose from 13 different colors including two-tone combinations. Select from multiple options to build the perfect jacket for your department.



BENEFITS OF GORE-TEX®

GORE-TEX® laminate is machine washable

Remains waterproof after more wet flexing, abrasion and cold flexing than any other waterproof/breathable fabric.

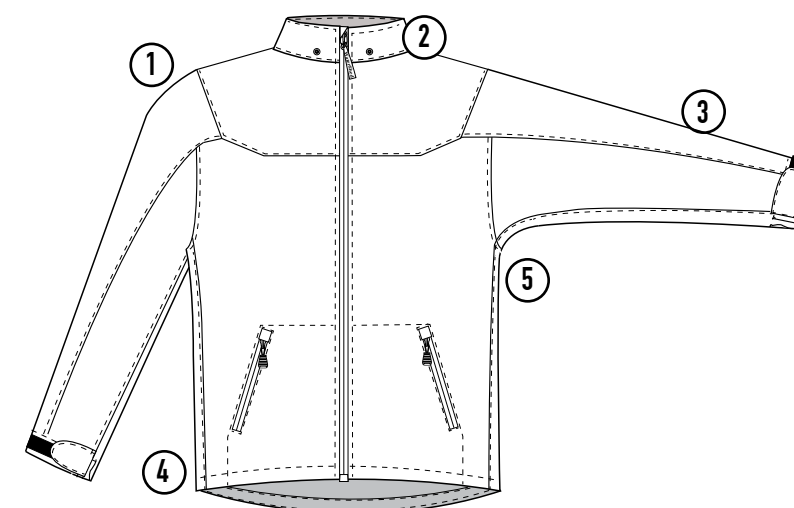
A total barrier to rain and snow, yet, permits perspiration vapor to escape, allowing your body to cool itself naturally through evaporation.

GORE-TEX® laminate is made by world class manufacturers who are licensed by W.L. Gore & Associates, Inc. and agree to manufacture according to Gore's strict quality assurance performance requirements.



2895 Valpak Road NE
Salem, Oregon 97301
PO BOX 7746
Salem, Oregon 97303
orders@gowatershed.com

T 800.848.8092
P 503.585.6741
F 503.581.7604
gowatershed.com



STANDARD FEATURES

GORE-TEX® 3-Layer laminate

Water resistant front zipper

Fleece lined lower front pockets w/ water resistant zippers

7" left forearm pocket w/ water resistant zipper

EZ-Action articulated sleeves

Elastic hook/loop cuff closures

Color matched badge tab or customer supplied breast patch

Fleece beard guard

Color matched mic tabs

Swoop tail design

Stand-up collar / snaps for hood

CUSTOM OPTIONS

- ① 13 colors available plus two-tone option
- ② Six collar & hood configurations
- ③ 12 sleeve lengths (1" increments)
- ④ Four body lengths (2" increments 28" to 34")
- ⑤ Weapons access & underarm zips

COLOR OPTIONS



ALSO AVAILABLE

- Custom back panels
- Stealth mode
- 3M-Scotchlite™ reflective
- Zip-in fleece liner available
- Embroidery / screen print
- Badge & patch custom options





DEPARTMENT FOCUSED

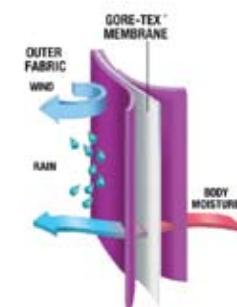
Available in standard or custom configurations. Custom jackets can be configured from a wide variety of options and colors.

TOTAL PROTECTION

Constructed of GORE-TEX® 3-layer laminate, proven to be durably waterproof, windproof and breathable fabric.

TACTICAL TO PRACTICAL

Waterproof zippered slant chest pockets for a sleek look and optimal performance.



BENEFITS OF GORE-TEX®

GORE-TEX® laminate is machine washable

Remains waterproof after more wet flexing, abrasion and cold flexing than any other waterproof/breathable fabric.

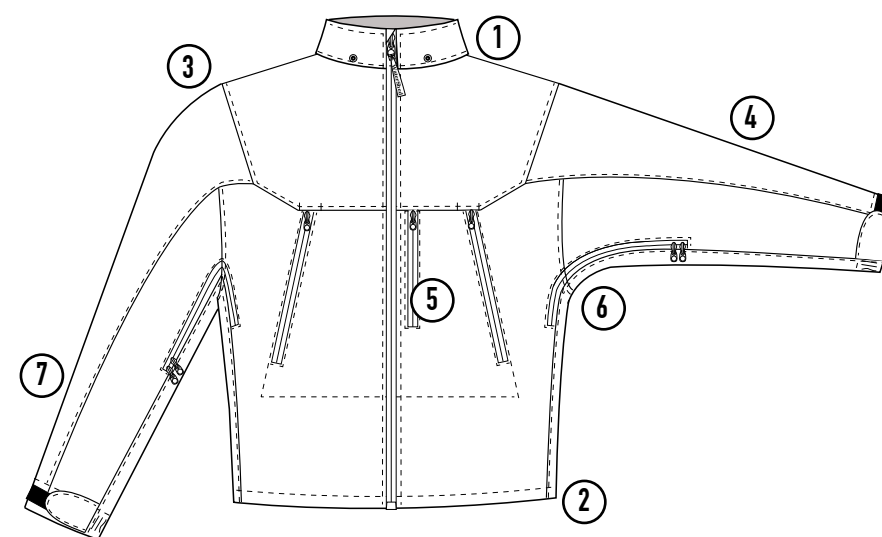
A total barrier to rain and snow, yet, permits perspiration vapor to escape, allowing your body to cool itself naturally through evaporation.

GORE-TEX® laminate is made by world class manufacturers who are licensed by W.L. Gore & Associates, Inc. and agree to manufacture according to Gore's strict quality assurance performance requirements.



2895 Valpak Road NE
Salem, Oregon 97301
PO BOX 7746
Salem, Oregon 97303
orders@gowatershed.com

T 800.848.8092
P 503.585.6741
F 503.581.7604
gowatershed.com



STANDARD FEATURES

- GORE-TEX® 3-Layer laminate
- Water resistant front zipper
- Straight hem w/drawstring
- EZ-Action articulated sleeves
- Elastic hook/loop cuff closures
- 7" left forearm pocket w/waterproof zipper
- Diagonal chest pockets w/zipper
- 3" stand-up collar
- Fleece beard guard
- Snaps for optional hood

CUSTOM OPTIONS

- 1 Six collar & hood configurations
- 2 3 body lengths (2" increments 24" to 28")
- 3 13 colors, plus two-tone designs
- 4 12 sleeve lengths (1" increments)
- 5 Left vertical chest pockets
- 6 Underarm vented zippers
- 7 Reinforcements to shoulder & elbow (GORE-TEX® laminate or cordura)
- 8 Mic/badge tab options

COLOR OPTIONS



ALSO AVAILABLE

- Zip-in fleece liner
- Custom back panel
- Stealth mode
- Custom embroidery
- Screen printing
- 3M-Scotchlite™ reflective





DEPARTMENT FOCUSED

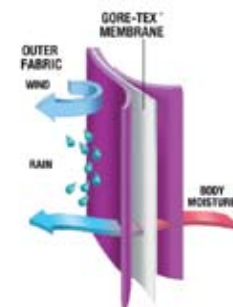
Available in standard or custom configurations. Custom jackets can be configured from a wide variety of options and colors.

TOTAL PROTECTION

Constructed of GORE-TEX® 3-layer laminate, proven to be durably waterproof, windproof and breathable fabric.

TACTICAL TO PRACTICAL

Waterproof zippered slant chestpockets for a sleek look and optimal performance. 3-piece sleeve with elbow articulation for full range of motion. 7" left forearm sleeve pocket ideal for personal protective device.



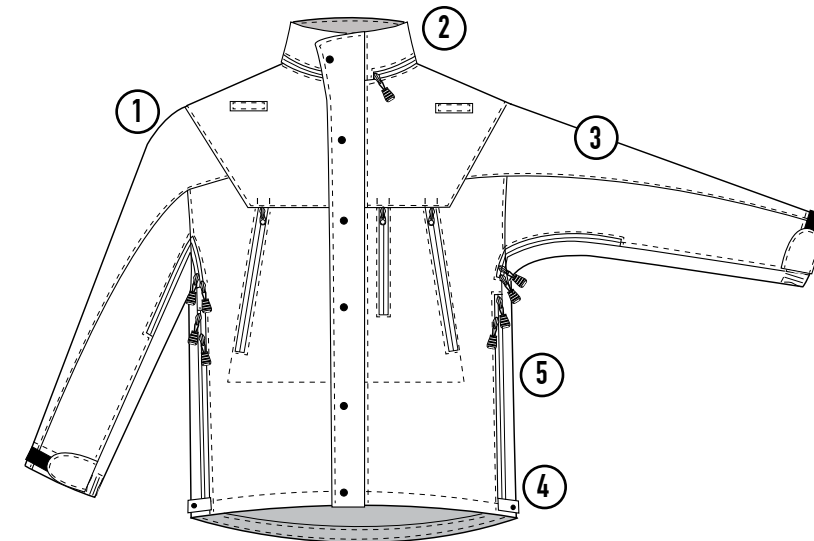
BENEFITS OF GORE-TEX®

GORE-TEX® laminate is machine washable.

Remains waterproof after more wet flexing, abrasion and cold flexing than any other waterproof/breathable fabric.

A total barrier to rain and snow, yet, permits perspiration vapor to escape, allowing your body to cool itself naturally through evaporation.

GORE-TEX® laminate is made by world class manufacturers who are licensed by W.L. Gore & Associates, Inc. and agree to manufacture according to Gore's strict quality assurance performance requirements.



STANDARD FEATURES

GORE-TEX® 3-Layer laminate

EZ-Action articulated sleeves

Elastic hook/loop cuff closures

Color matched badge tab or customer supplied breast patch

Color matched mix tabs

Front storm flap

3" stand collar

Snaps for optional hood

3 water resistant zippered chest pockets

CUSTOM OPTIONS

- ① 13 colors available plus two-tone
- ② Six collar & hood configurations
- ③ 12 sleeve lengths (1" increments)
- ④ Nine body lengths (2" increments 20" to 36")
- ⑤ Weapons access & underarm water resistant zippers

COLOR OPTIONS



ALSO AVAILABLE

- Custom back panels
- Stealth mode
- 3M-Scotchlite™ reflective
- Zip-in fleece liner available
- Embroidery/screen print
- Badge & patch custom options



2895 Valpak Road NE T 800.848.8092
Salem, Oregon 97301 P 503.585.6741
PO BOX 7746 F 503.581.7604
Salem, Oregon 97303
orders@gowatershed.com gowatershed.com





DEPARTMENT FOCUSED

Outfit your entire department from office to duty in a four way stretch base layer protection with custom options available for reflective, embroidery and custom fitting.

FEATURES

Fleece backed four way stretch material that is extremely breathable, water resistant and windproof. Full range of motion sleeves, athletic inspired torso for comfort under external carrier. Integrates into the Tango shell jacket.

MULTIPLE SIZES AVAILABLE

Standard Sizes: XXS - XL
Additional Sizes: 2XL - 6XL (+)



ABOUT WATERSHED

We provide premium waterproof outerwear build specifically for YOU, the American worker. Our innovative products are designed to be “worker friendly” by minimizing fatigue and stress on the body. We use state of the art design, cutting and manufacturing systems that allow us to build all of our products to your size and specifications. All of our products are custom built in Salem, Oregon USA.

ABOUT STORMFORCE®

STORMFORCE® is the premium quality and service that you expect from WaterShed specifically designed for the Public Safety Professional.

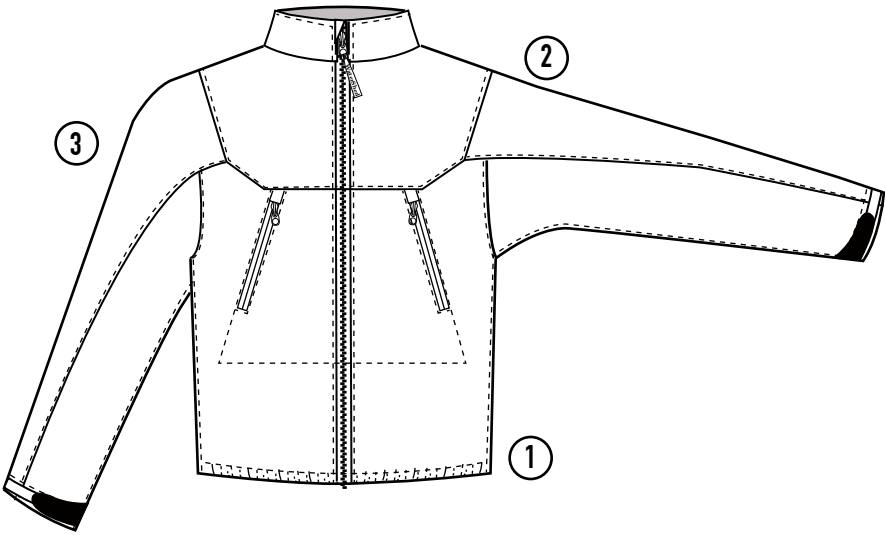
POLICE, MILITARY
TACTICAL, FIRE / EMS

POLICE, MILITARY
TACTICAL, FIRE/EMS

When Duty Calls.
Call on STORMFORCE® by WaterShed®
To Protect You From The Elements.



2895 Valpak Road NE T 800.848.8092
Salem, Oregon 97301 P 503.585.6741
PO BOX 7746 F 503.581.7604
Salem, Oregon 97303
orders@gowatershed.com gowatershed.com



STANDARD FEATURES

Softshell fleece lined fabric

100% waterproof, windproof and
breathable

Integrates into WaterShed duty jackets

Left front vertical zipper

3” stand collar

COLOR OPTIONS



Available in black only.

CUSTOM OPTIONS

- ① Available in 24” to 28” body
- ② 3M-Scotchlite™ reflective tape placement
- ③ Embroidery or patch application



DEPARTMENT FOCUSED

Outfit your entire department from office to duty in a four way stretch base layer protection with custom options available for reflective, embroidery and custom fitting.

FEATURES

Fleece backed four way stretch material that is water resistant and windproof. Body lengths available starting at 24" up to 28" long. Features a 3" stand up collar, vertical left security pocket, two fleece lined side pockets and elastic cuffs.

MULTIPLE SIZES AVAILABLE

Standard Sizes: XXS - XL
Additional Sizes: 2XL - 6XL (+)



ABOUT WATERSHED

We provide premium waterproof outerwear build specifically for YOU, the American worker. Our innovative products are designed to be "worker friendly" by minimizing fatigue and stress on the body. We use state of the art design, cutting and manufacturing systems that allow us to build all of our products to your size and specifications. All of our products are custom built in Salem, Oregon USA.

ABOUT STORMFORCE®

STORMFORCE® is the premium quality and service that you expect from WaterShed® specifically designed for the Public Safety Professional.

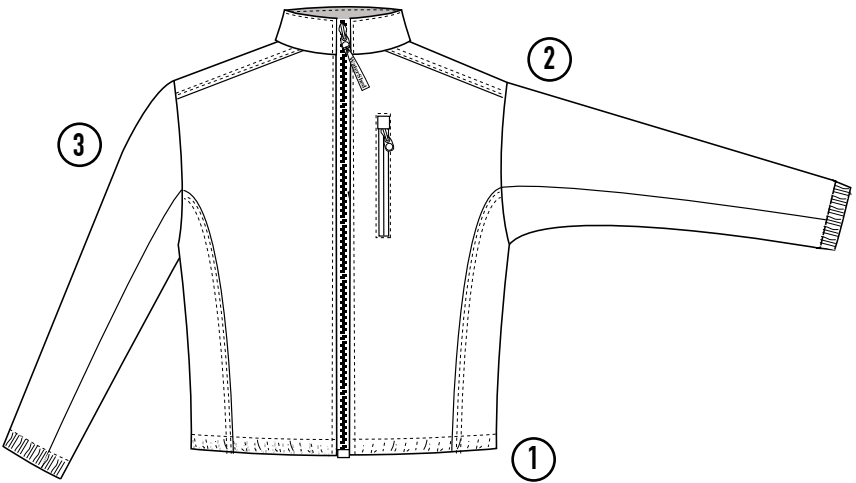
POLICE, MILITARY
TACTICAL, FIRE / EMS

POLICE, MILITARY
TACTICAL, FIRE/EMS

When Duty Calls.
Call on STORMFORCE® by WaterShed
To Protect You From The Elements.



2895 Valpak Road NE T 800.848.8092
Salem, Oregon 97301 P 503.585.6741
PO BOX 7746 F 503.581.7604
Salem, Oregon 97303
orders@gowatershed.com gowatershed.com



STANDARD FEATURES

Softshell fleece lined fabric

100% waterproof, windproof and
breathable

Integrates into WaterShed duty jackets

Left front vertical zipper

3" stand collar

COLOR OPTIONS



CUSTOM OPTIONS

- ① Available in 24" to 28" body
- ② 3M-Scotchlite™ reflective tape placement
- ③ Embroidery or patch application





VISIBLE PROTECTION

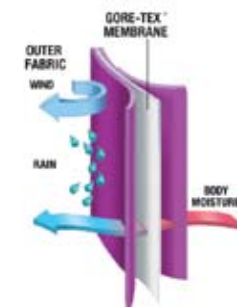
Constructed of GORE-TEX® 3-layer material, fully reversible, durably waterproof, totally windproof, highly breathable.

MULTI-FUNCTION AND PROTECTION

Reverses to ANSI/ISEA 107 -2004 CLASS 3 Configurable colors and options

ULTIMATE PERFORMANCE

NTOA Tested and recommended. Ideal for multi-season use. Premium performance, made in the USA and custom built for you.



BENEFITS OF GORE-TEX®

GORE-TEX® laminate is machine washable.

Remains waterproof after more wet flexing, abrasion and cold flexing than any other waterproof/breathable fabric.

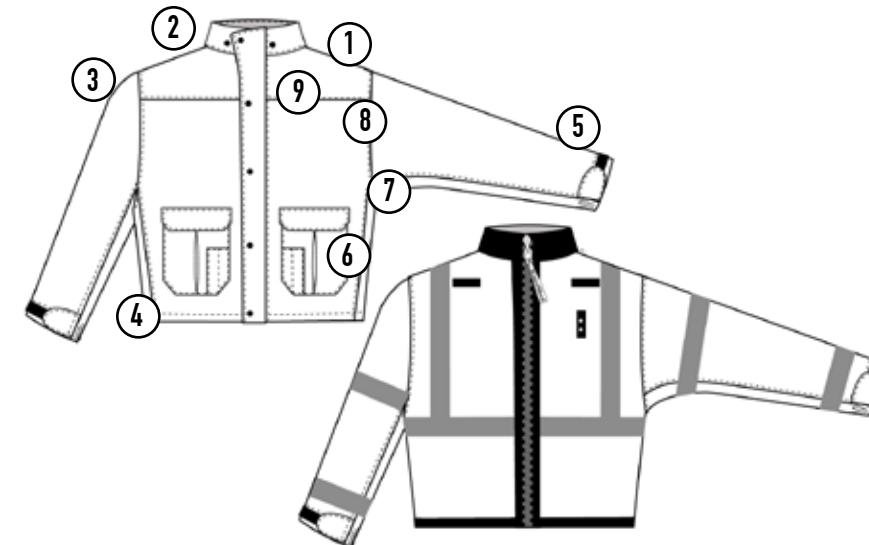
A total barrier to rain and snow, yet, permits perspiration vapor to escape, allowing your body to cool itself naturally through evaporation.

GORE-TEX® laminate is made by world class manufacturers who are licensed by W.L. Gore & Associates, Inc. and agree to manufacture according to Gore's strict quality assurance performance requirements.



2895 Valpak Road NE
Salem, Oregon 97301
PO BOX 7746
Salem, Oregon 97303
orders@gowatershed.com

T 800.848.8092
P 503.585.6741
F 503.581.7604
gowatershed.com



STANDARD FEATURES

GORE-TEX® 3-Layer laminate

Two fleece lined cargo pockets w/pen pockets

Elastic velcro cuff closure

Color matched badge tab/mic tabs

Customer supplied breast patch

Reverse to ANSI Class 3 Hi-Vis Lime

COLOR OPTIONS



CUSTOM OPTIONS

- ① 13 colors available plus two-tone
- ② Six collar & hood configurations
- ③ 3M-Scotchlite™ reflective
- ④ Six body lengths (2" increments 26" to 36")
- ⑤ 12 Sleeve lengths (1" increments)
- ⑥ Four pocket options
- ⑦ Weapons access & underarm zips
- ⑧ Custom back panels, stealth mode, embroidery or screen print
- ⑨ Badge and patch custom options



TACTICAL PROTECTION

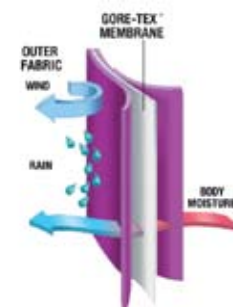
Constructed of GORE-TEX® 3-layer material, fully reversible to lightweight Taslon Black or Woodland Camo. Offering customizable department focused duty wear and tactical stealth wear all in one.

ULTIMATE PERFORMANCE

Strategic construction of front hand warming cargo pockets allows quick and easy access to necessary tools and equipment.

TOUGH STUFF

Durably Waterproof, Windproof and highly breathable GORE-TEX® 3-Layer material combined with optional cordura reinforcements in high impact areas allow to stay dry and comfortable in kneeling or prone positions.



BENEFITS OF GORE-TEX®

GORE-TEX® laminate is machine washable.

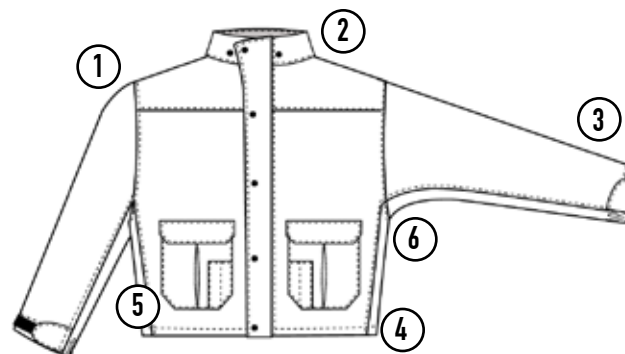
Remains waterproof after more wet flexing, abrasion and cold flexing than any other waterproof/breathable fabric.

A total barrier to rain and snow, yet, permits perspiration vapor to escape, allowing your body to cool itself naturally through evaporation.

GORE-TEX® laminate is made by world class manufacturers who are licensed by W.L. Gore & Associates, Inc. and agree to manufacture according to Gore's strict quality assurance performance requirements.



2895 Valpak Road NE
Salem, Oregon 97301
PO BOX 7746
Salem, Oregon 97303
orders@gowatershed.com
T 800.848.8092
P 503.585.6741
F 503.581.7604
gowatershed.com



STANDARD FEATURES

JACKET

GORE-TEX® 3-Layer laminate

Fully reversible

Two fleece lined hand warmer pockets w/double pen pockets

Ez-action articulated sleeves

Elastic hook/loop cuff closures

Color matched badge tab or customer supplied breast patch

Color matched mic tabs

Snaps for optional hood

PANT

1.5" elastic waistband w/draw cord

18" water resistant leg zippers

Cuff snaps to seal against boots

CUSTOM OPTIONS

- ① 13 colors available plus two-tone
- ② Six collar & hood configurations
- ③ 12 sleeve lengths (1" increments)
- ④ Nine body lengths (2" increments 20" to 36")
- ⑤ Pocket options
- ⑥ Weapons access & underarm water resistant zippers

COLOR OPTIONS



ALSO AVAILABLE

Custom back panels, stealth mode, embroidery/screen print, badge & patch custom options

Multiple reflective placement

GORE-TEX® laminate reinforcements to elbows, shoulders, seat, knee, front & cuffs





VISIBLE PROTECTION

Constructed of GORE-TEX® 3-layer material, strategic 3M reflective tape placement, durably waterproof, totally windproof, highly breathable.

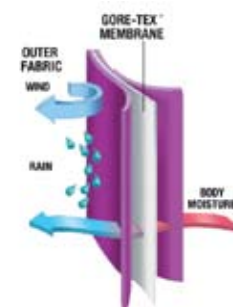


MULTI-FUNCTION AND PROTECTION

Foam padding at shoulders, lumbar and elbows for the durable protection you need while you ride. Strategically placed water resistant zippered pocket placements.

ULTIMATE PERFORMANCE

Ideal for multi-season use. Premium performance, made in the USA and custom built for you.



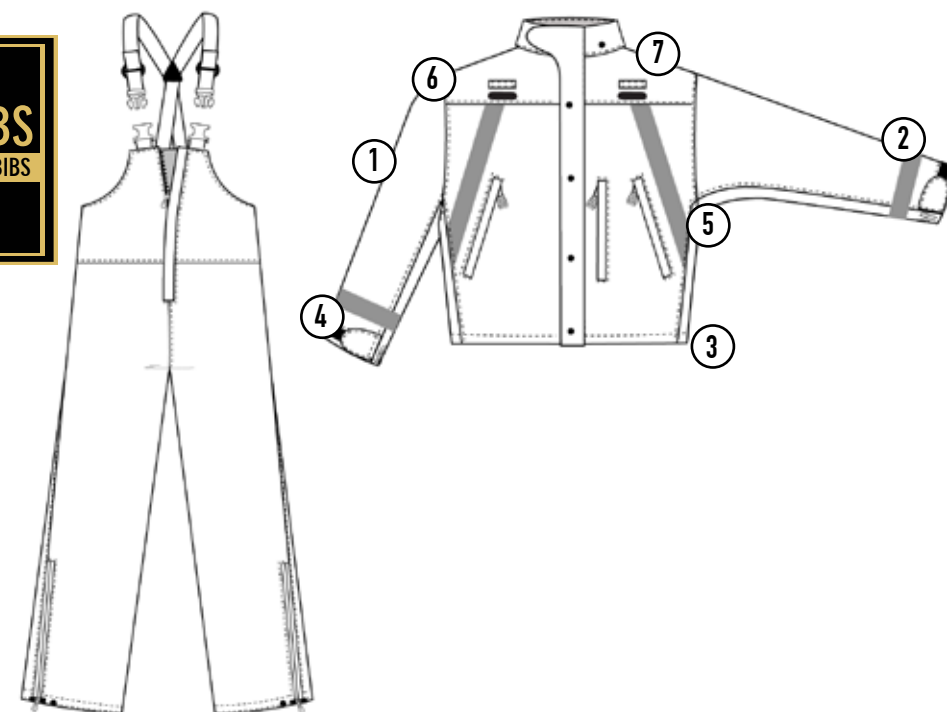
BENEFITS OF GORE-TEX®

GORE-TEX® laminate is machine washable.

Remains waterproof after more wet flexing, abrasion and cold flexing than any other waterproof/breathable fabric.

A total barrier to rain and snow, yet, permits perspiration vapor to escape, allowing your body to cool itself naturally through evaporation.

GORE-TEX® laminate is made by world class manufacturers who are licensed by W.L. Gore & Associates, Inc. and agree to manufacture according to Gore's strict quality assurance performance requirements.



STANDARD FEATURES

GORE-TEX® 3-Layer laminate

3 zippered chest pockets

Elastic & velcro cuff closure

Color matched badge tab

Customer supplied breast patch

Color matched mic tabs

CUSTOM OPTIONS

- ① 13 colors available plus two-tone
- ② 3M-Scotchlite™ reflective
- ③ Six body lengths (26" - 36", 2" increments)
- ④ 12 sleeve lengths (1" increments)
- ⑤ Weapons access & underarm zippers
- ⑥ Custom back panels, stealth mode, embroidery or screen print
- ⑦ Badge and patch custom options

COLOR OPTIONS



2895 Valpak Road NE
Salem, Oregon 97301
PO BOX 7746
Salem, Oregon 97303
orders@gowatershed.com

T 800.848.8092
P 503.585.6741
F 503.581.7604
gowatershed.com

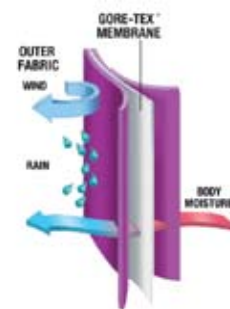


MOTORCYCLE GRIP COVERS



Made out of 3-Layer GORE-TEX® fabric. These water-proof covers easily slip over motorcycle handle bars to help keep hands warm and handles dry during blustery days. Scotchlite 3M® reflective tape helps keep you in eye sight for maximum protection on your bike. Multiple zipper pulls on top and zipper opening to aid in sealing around your handle bar tools. Easy access to all controls, lightweight, durable, officer designed and approved.

MADE IN U.S.A.



BENEFITS OF GORE-TEX®

GORE-TEX® laminate is machine washable.

Remains waterproof after more wet flexing, abrasion and cold flexing than any other waterproof/breathable fabric.

A total barrier to rain and snow, yet, permits perspiration vapor to escape, allowing your body to cool itself naturally through evaporation.

GORE-TEX® laminate is made by world class manufacturers who are licensed by W.L. Gore & Associates, Inc. and agree to manufacture according to Gore's strict quality assurance performance requirements.



2895 Valpak Road NE T 800.848.8092
Salem, Oregon 97301 P 503.585.6741
PO BOX 7746 F 503.581.7604
Salem, Oregon 97303
orders@gowatershed.com gowatershed.com



TOTAL PROTECTION

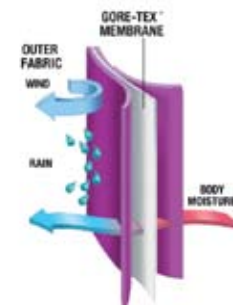
Constructed of GORE-TEX® 3-layer laminate, proven to be durably waterproof, windproof and breathable fabric.

VERSATILE DESIGN

Choose from multiple options to create the perfect waterproof solution. Adjust the rise, length, and cuffs to your exact specifications. Pair with a StormForce™ jacket for a complete waterproof solution.

DEPARTMENT FOCUSED

We put you in control. Choose from 13 different colors. Select from multiple options to build the perfect pant for your department.



BENEFITS OF GORE-TEX®

GORE-TEX® laminate is machine washable.

Remains waterproof after more wet flexing, abrasion and cold flexing than any other waterproof/breathable fabric.

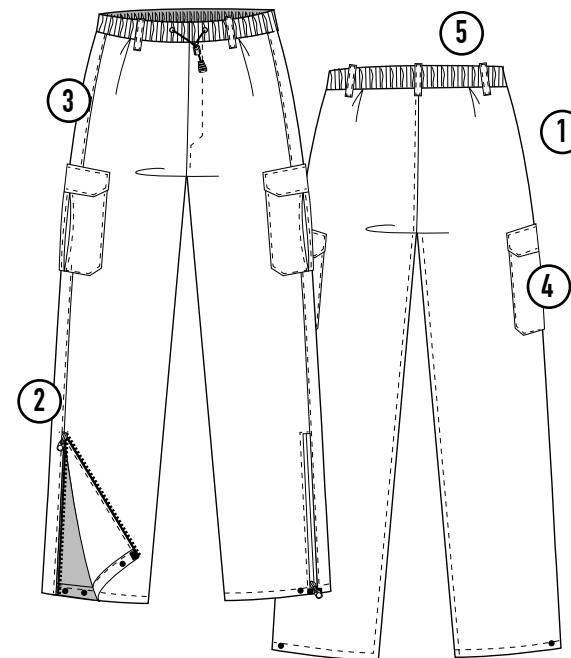
A total barrier to rain and snow, yet, permits perspiration vapor to escape, allowing your body to cool itself naturally through evaporation.

GORE-TEX® laminate is made by world class manufacturers who are licensed by W.L. Gore & Associates, Inc. and agree to manufacture according to Gore's strict quality assurance performance requirements.



2895 Valpak Road NE
Salem, Oregon 97301
PO BOX 7746
Salem, Oregon 97303
orders@gowatershed.com

T 800.848.8092
P 503.585.6741
F 503.581.7604
gowatershed.com



STANDARD FEATURES

GORE-TEX® 3-Layer laminate

1.5" elastic waistband w/draw cord

12" water resistant leg zippers

Cuff snaps to seal against boots

BRAVO PANT CUSTOM OPTIONS

- ① 13 colors available plus two-tone
- ② 3M-Scotchlite™ reflective
- ③ Side access zippers
- ④ Pocket options include side zippered, cargo, SAP back
- ⑤ Belt keepers or belt loops

ALSO AVAILABLE

Length & rise adjustment

Reinforcements to seat, knee front & cuffs

18" leg zippers

COLOR OPTIONS





TOTAL PROTECTION

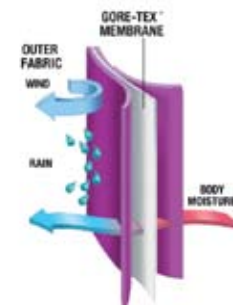
Constructed of GORE-TEX® 3-layer laminate, proven to be durably waterproof, windproof and breathable fabric.

VERSATILE DESIGN

Choose from multiple options to create the perfect waterproof solution. Adjust the rise, length, and cuffs to your exact specifications. Pair with a StormForce™ jacket for a complete waterproof solution.

DEPARTMENT FOCUSED

We put you in control. Choose from 13 different colors. Select from multiple options to build the perfect pair of bibs for your department.



BENEFITS OF GORE-TEX®

GORE-TEX® laminate is machine washable.

Remains waterproof after more wet flexing, abrasion and cold flexing than any other waterproof/breathable fabric.

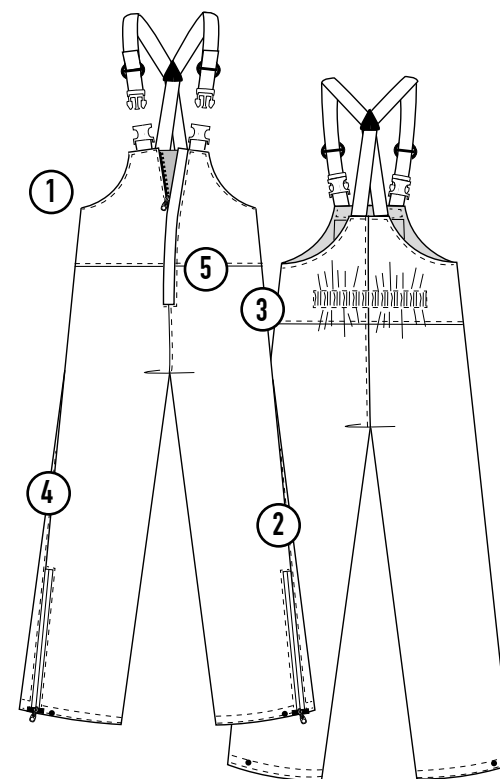
A total barrier to rain and snow, yet, permits perspiration vapor to escape, allowing your body to cool itself naturally through evaporation.

GORE-TEX® laminate is made by world class manufacturers who are licensed by W.L. Gore & Associates, Inc. and agree to manufacture according to Gore's strict quality assurance performance requirements.



2895 Valpak Road NE
Salem, Oregon 97301
PO BOX 7746
Salem, Oregon 97303
orders@gowatershed.com

T 800.848.8092
P 503.585.6741
F 503.581.7604
gowatershed.com



STANDARD FEATURES

GORE-TEX® 3-Layer laminate

Elastic suspenders w/heavy duty fasteners

12" water resistant leg zippers

Cuff snaps to seal against boots

CHARLIE BIBS CUSTOM OPTIONS

- ① 13 colors available plus two-tone
- ② 3M-Scotchlite™ reflective
- ③ Side access zippers
- ④ Pocket options include side zippered, cargo, SAP back
- ⑤ Belt keepers or belt loops

ALSO AVAILABLE

Length & rise adjustment

Reinforcements to seat, knee front & cuffs

18" leg zippers

COLOR OPTIONS





A DUTY JACKET NECESSITY

A fleece base layer protection with custom lengths available starting from 22" to 28" in body length.

FEATURES

A comfortable fleece liner that can easily zip and snap into your StormForce duty jacket for a complete integration with the shell. A great option for extra warmth when you need it most.

MULTIPLE SIZES AVAILABLE

Standard Sizes: XXS - XL
Additional Sizes: 2XL - 6XL(+)



ABOUT WATERSHED

We provide premium waterproof outerwear build specifically for YOU, the American worker. Our innovative products are designed to be "worker friendly" by minimizing fatigue and stress on the body. We use state of the art design, cutting and manufacturing systems that allow us to build all of our products to your size and specifications. All of our products are custom built in Salem, Oregon USA.

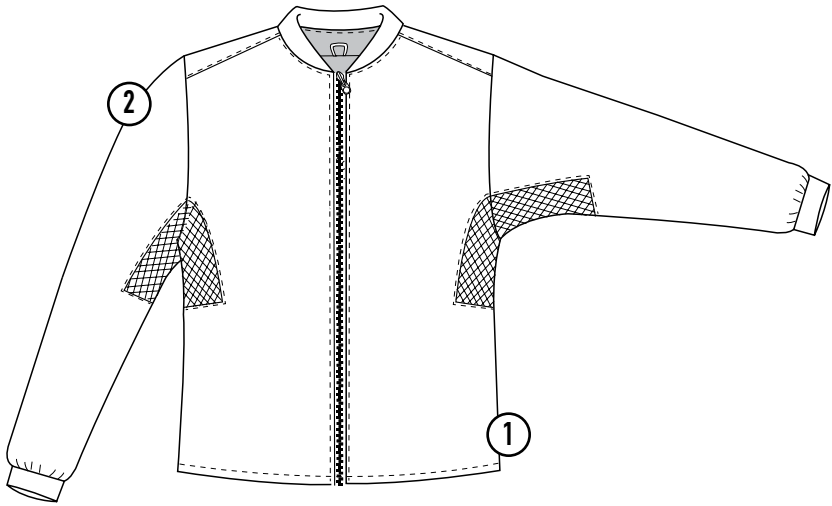
ABOUT STORMFORCE

STORMFORCE® is the premium quality and service that you expect from WaterShed® specifically designed for the Public Safety Professional.

POLICE, MILITARY
TACTICAL, FIRE / EMS

POLICE, MILITARY
TACTICAL, FIRE/EMS

When Duty Calls.
Call on STORMFORCE® by WaterShed®
To Protect You From The Elements.



STANDARD FEATURES

Fully integrates into WaterShed duty jackets

Soft black fleece fabric

Mesh underarm vents for breathability

Baseball style collar

COLOR OPTIONS



CUSTOM OPTIONS

- ① Available in 24" to 30" body
- ② Double fleece layer available



2895 Valpak Road NE
Salem, Oregon 97301
PO BOX 7746
Salem, Oregon 97303
orders@gowatershed.com

T 800.848.8092
P 503.585.6741
F 503.581.7604
gowatershed.com



PROTECTION LAYER

Constructed of an exterior taslon, interior taffeta fabric, and fleece, two zippered slash pockets, 3 points of attachment for your outer shell, mesh underarm vents and fleece cuffs.

MULTI-FUNCTION AND PROTECTION

Protect yourself from the elements in this protection fleece layer. Wear alone or with an outer shell. Stay warm and dry while focusing on the task at hand.

ULTIMATE PERFORMANCE

Ideal for multi-season use. Premium performance, made in the U.S.A. and custom built for you.



ABOUT WATERSHED

We provide premium waterproof outerwear build specifically for YOU, the American worker. Our innovative products are designed to be “worker friendly” by minimizing fatigue and stress on the body. We use state of the art design, cutting and manufacturing systems that allow us to build all of our products to your size and specifications. All of our products are custom built in Salem, Oregon USA.

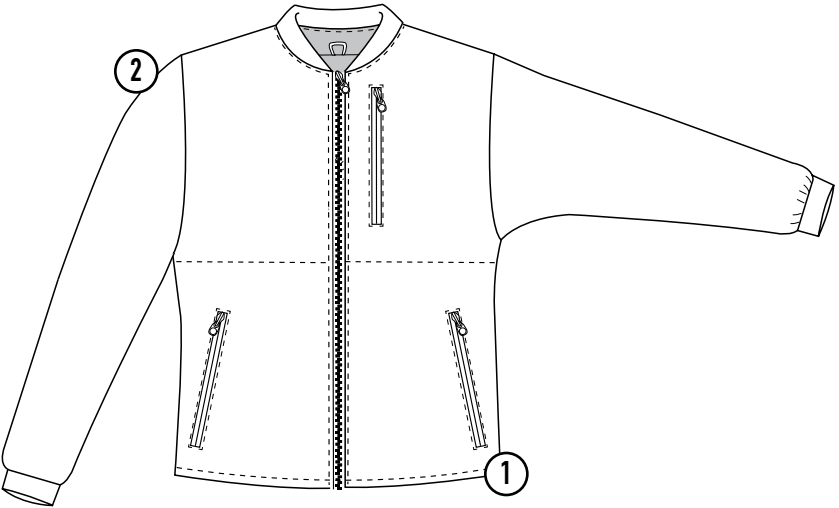
ABOUT STORMFORCE®

STORMFORCE® is the premium quality and service that you expect from WaterShed® specifically designed for the Public Safety Professional.

POLICE, MILITARY
TACTICAL, FIRE / EMS

POLICE, MILITARY
TACTICAL, FIRE/EMS

When Duty Calls.
Call on STORMFORCE® by WaterShed®
To Protect You From The Elements.



STANDARD FEATURES

Fully integrates into WaterShed duty jackets

Soft black fleece fabric lined with taffeta with an exterior of taslon

Mesh underarm vents for breathability

Baseball style collar

COLOR OPTIONS



CUSTOM OPTIONS

①

Available in 24” to 30” body

②

3M-Scotchlite™ reflective tape placement



2895 Valpak Road NE
Salem, Oregon 97301
PO BOX 7746
Salem, Oregon 97303
orders@gowatershed.com

T 800.848.8092
P 503.585.6741
F 503.581.7604
gowatershed.com



THE ONLY UNIFORM YOU NEED ON DUTY

One uniform, multiple fabric options. Select from fabrics such as water repellant Ultrex, Dintex in winter or summer fabric, or cordura with two tone options.

STANDARD FEATURES

Nine pockets include: two chest pockets w/ pencil pocket, two front thigh pockets, two back pockets and two flashlight pockets. Center front zipper for easy access, leg zippers, 5 belt loops, velcro cuff closures on sleeves and legs.

CUSTOM OPTIONS

Choose from custom options such as; zip off sleeves, three additional pockets, stealth back panels and badge placement.



STYLES, FABRICS AND COLORS

B2 ULTREX SUIT – Available in Black, CHP Navy, LA Navy, Brown, Olive, Forest Green or Tan.

C1 CORDURA SUIT – Available in Black, Navy, Forest Green

C2 CORDURA TWO TONE SUIT – Available in Two-Tone color combos of Black, Navy or Forest Green.

D1 FLEECE WINTER SUIT – Available in Black, Navy or Forest Green.

D2 DINTEX SUMMER SUIT – Available in Black, Navy or Forest Green.

STANDARD FEATURES

Center front zipper opening

Fold down collar

9 Pocket placements

Velcro cuff closures on sleeves & legs

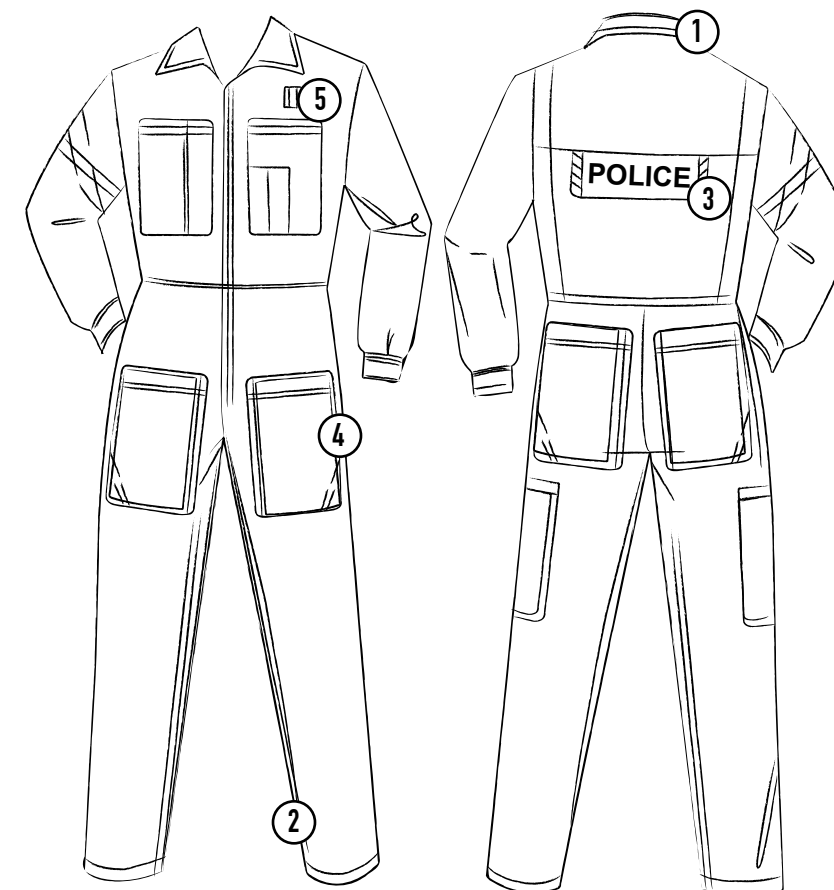
CUSTOM OPTIONS

- ① Hood attachment (B2 only)
- ② Rise, inseam and sleeve adjustments (1" increments)
- ③ Stealth back panels
- ④ 3 Extra pocket options
- ⑤ Badge, patch, and name tag



2895 Valpak Road NE
Salem, Oregon 97301
PO BOX 7746
Salem, Oregon 97303
orders@gowatershed.com

T 800.848.8092
P 503.585.6741
F 503.581.7604
gowatershed.com



POCKET OPTIONS





STORMFORCE®
BY WaterShed®



WATERSHED UNISEX SIZING CHART

PUBLIC SAFETY DIVISION - WATERSHED, INC

		XS	S	M	L	XL	2XL	3XL	4XL	5XL	6XL
JACKET	CHEST	35-37	38-40	41-43	44-46	47-49	50-52	53-55	56-58	59-61	62-64
	SLEEVE	32	32 3/4	33 1/2	34 1/4	35	35 3/4	36 1/2	37 1/4	38 1/4	39 1/4
PANT	WAIST	27-29	30-32	33-35	36-38	39-41	42-44	45-47	48-50	51-53	54-56
	INSEAM	28 1/2	29	29 1/2	30	31	32	32 1/2	33	33 1/2	34

ABOVE MEASUREMENTS ARE IN INCHES

AVAILABLE JACKET ALTERATIONS

Length of the jacket body (2" INCREMENTS)

Sleeve length (1" INCREMENTS)

NOTE: Sleeve measurements are from the sleeve cuff to the center of the neck.

AVAILABLE PANT ALTERATIONS

Rise of pants (1" INCREMENTS)

Inseam (1" INCREMENTS)

SLEEVE MEASUREMENT PROCESS

Measure the sleeve length from the center back of the neck, over the shoulder tip, around the elbow with the arm bent to a 45 degree angle, then ending at the wrist break.

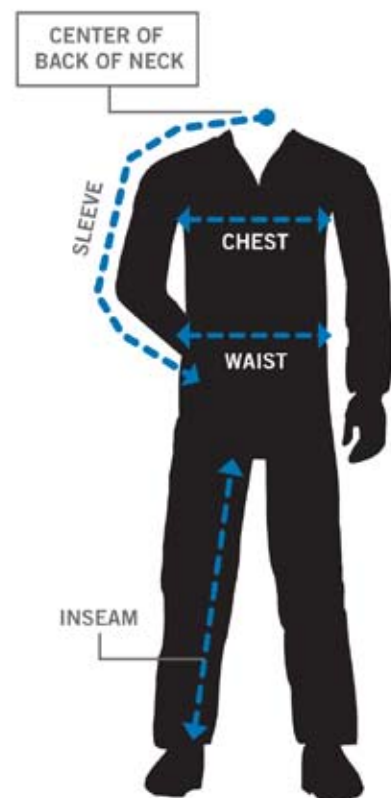
SIZING SAMPLES ARE AVAILABLE UPON REQUEST

WaterShed staff is available by appointment to assist in the sizing process.

Please Call **800-848-8092** and ask for Customer Service

ALL MEASUREMENTS SHOULD BE MADE WHEN OFFICER IS IN FULL UNIFORM

ALL PERSONAL PROTECTION EQUIPMENT SHOULD BE WORN WHEN SIZING



BUILT WITH GORE-TEX®, FABRIC FOR PERFORMANCE UNMATCHED BY ANY OTHER WATERPROOF, WINDPROOF BREATHABLE BARRIER. GORE-TEX®, GORE AND DESIGNS ARE TRADEMARKS OF W.L. GORE & ASSOCIATES, INC



STORMFORCE®
BY WaterShed

2895 Valpak Road NE
Salem, Oregon 97301

T 800.848.8092 P 503.585.6741 F 503.581.7604
PO BOX 7746
Salem, Oregon 97303

orders@gowatershed.com

gowatershed.com